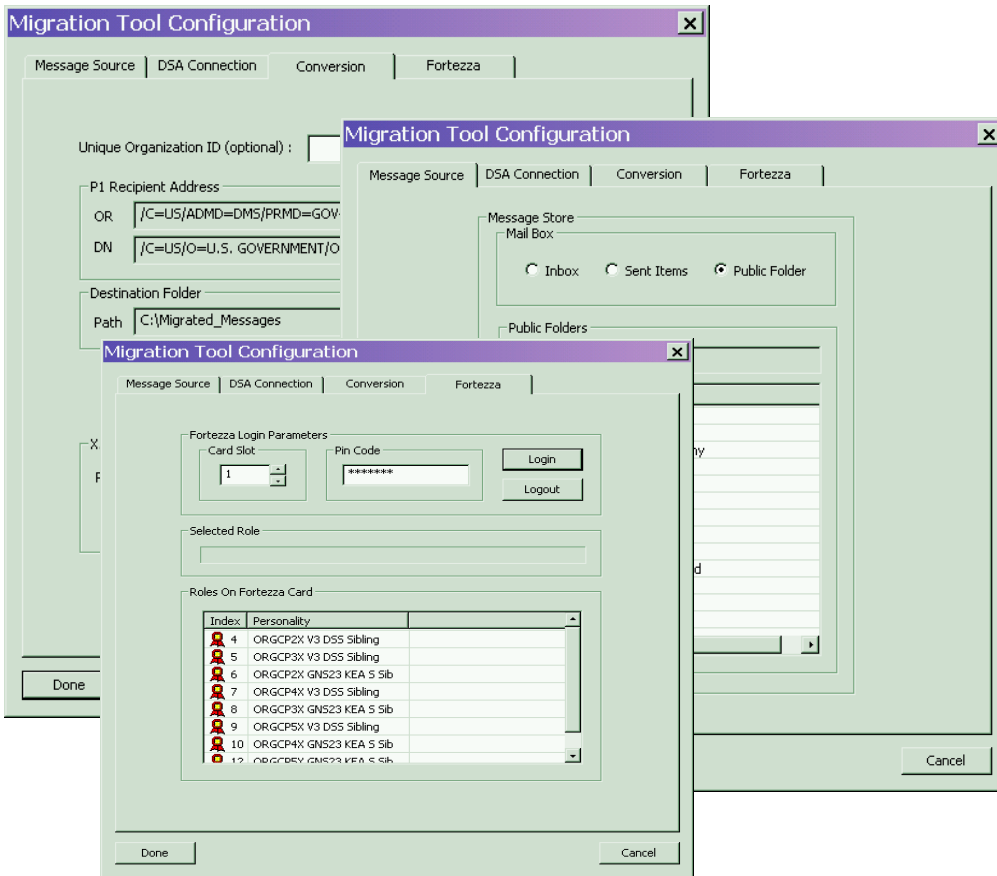




... Migrates Microsoft Exchange™ messages into CP-EXP-enabled applications such as the AMHS.



The CommPower Message Migration Tool (CP-MMT™) was developed to aid in the migration of existing DMS Microsoft Exchange based message systems to an AMHS/CP-EXP based environment. This tool provides the capability to convert signed and encrypted (SE) and signed only (SO) messages that reside within a Microsoft Exchange mailbox to standard CP-EXP Extensible Markup Language (XML) format. Once converted, the messages can be imported directly into the AMHS (or other similar mail server).

CP-MMT is available directly from CommPower

Configuration

- Messages can be exported from the Exchange Inbox, Sent Items, or designated public folder.
- FORTEZZA credentials are utilized as necessary to decrypt messages and thus expose their content for export.

Exchange Export

- Default organizational values can be specified to ensure that the exported messages can be imported into the correct AMHS account.
- The CP-MMT exports each message into a separate XML message file.
- The Exchange mailbox/folder contents are left unchanged.

AMHS Import

- Once converted, the exported Exchange messages (in CP-EXP XML format) can be introduced into an AMHS system for permanent storage.
- The AMHS system treats all messages as if they were delivered via the CP-EXP. Therefore, all AMHS message-processing capabilities are available.



Communications & Power Engineering, Inc.
Contact: productinfo@commpower.com
www.commpower.com