

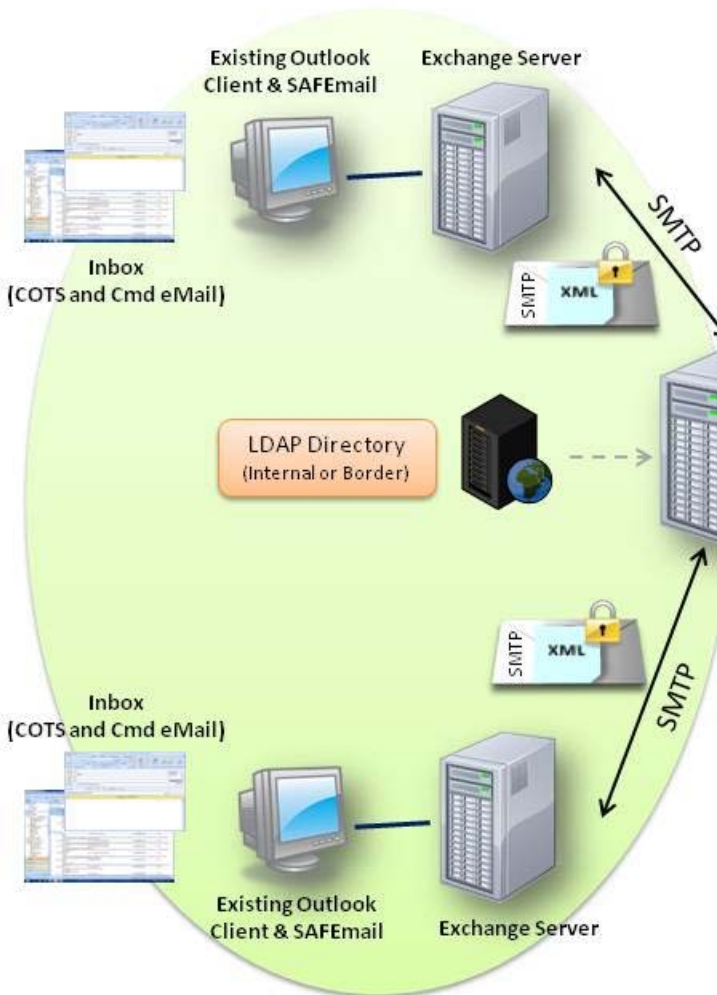


... In partnership with
brings you:

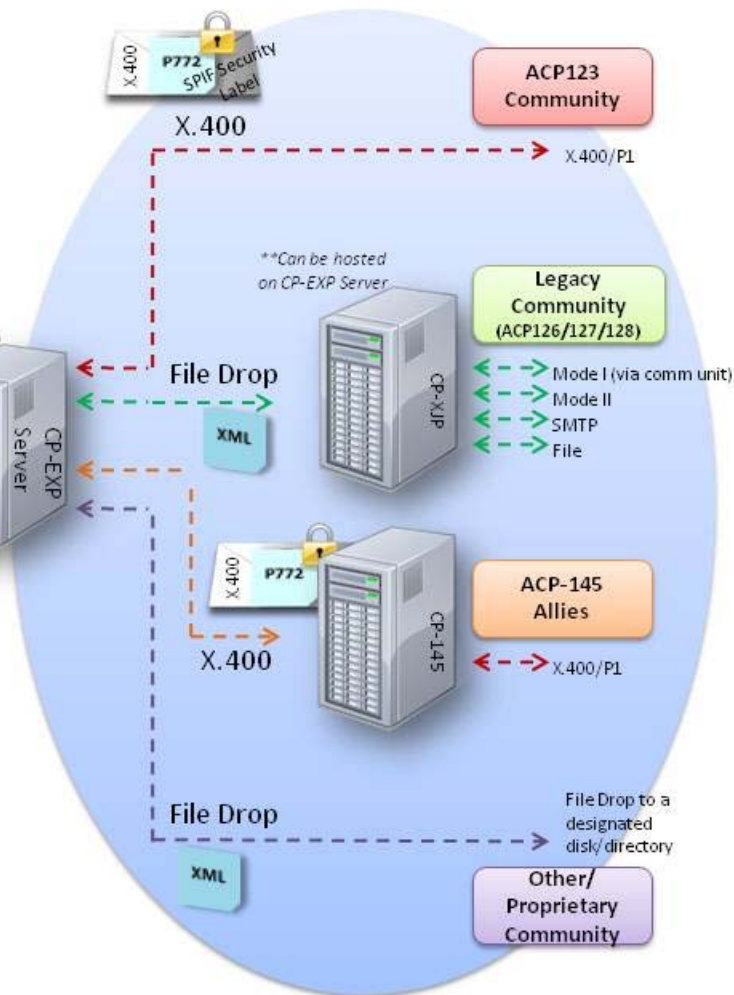
boldonjames
A QinetiQ Company

Command Email

Exchange Email (Commercial and Command)



Military/Other Messaging



Finally, a commercial based email capability that offers defense capabilities within your existing Microsoft Exchange™ environment with full interoperability to other external Military Messaging domains (DMS, ACP123/P772, Legacy, ACP-145 and Others).

With this capability, users can communicate globally from their single Outlook client; and Systems Administrators need only maintain a single messaging system.

To transform your Exchange environment into a Command Email capability requires only the Boldon James SAFEmail™ Outlook™ plug-in (for defense forms and associated access controls) and the CommPower CP-EXP™ (for seamless connectivity to external systems).

This capability is available NOW !!!

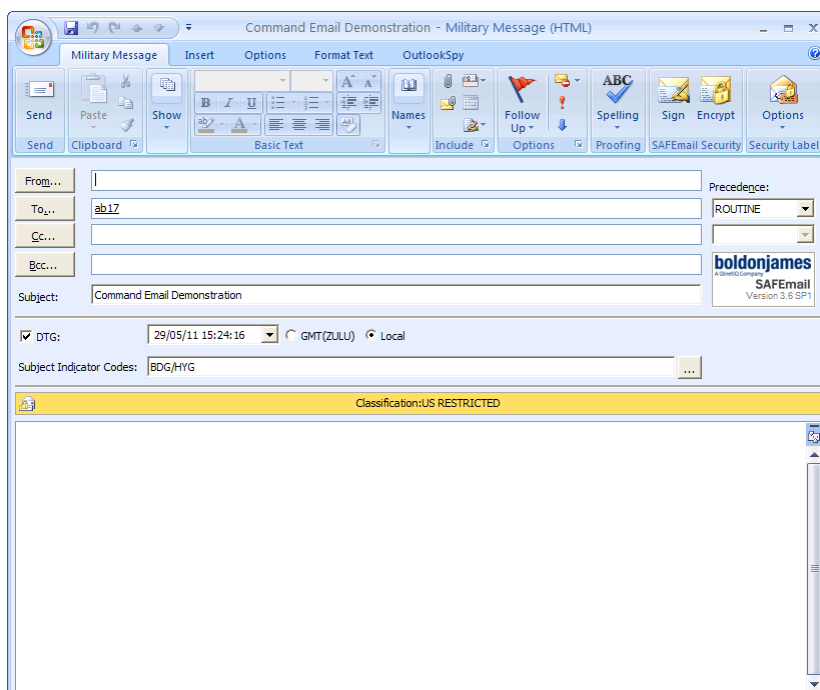
Command Email Features:

General Features:

- Single Defense Email Network. Separate formal/personal email systems are no longer required.
- Command Email Functionality layered onto the existing COTS infrastructure.
- Full or Virtualized Web Clients.
- Gateway to other domains via the CP-EXP.
- Massive Cost Savings due to a single network and reduced system administration & user training.
- Proven: the CP-EXP and SAFEmail clients are deployed and operational.

CP-EXP: At the current time, the CP-EXP is the prolific component for Service/Agency DMS/ACP123/P772 connectivity (including interoperability with deployed ACP-145 and legacy gateways). This product has been enhanced with an SMTP interface for message exchange directly with the Microsoft Exchange server thus providing all CP-EXP gateway services to this commercial domain.

SAFEmail: Provides an intuitive Command Email form within the COTS Outlook client. Elements of Service can be hidden/exposed as required. Also provided are SMIME and DMS compliant protective markings that guarantee security, integrity and confidentiality within and across domain boundaries.



- Outlook 2003/2007/2010
- Full Client or Virtualized Web
- Deployed and proven
- Customizable
- SMIME ESS (signature and encryption services)
- Labels and Access Control (Personal, Role, Organization)
- Draft Review and Release
- Fire and Monitor or Fire and Forget
- Fully Modular
- Features enabled/disabled based on the user's log-on profile

Profiling Extensions: Profiling services are also available as an Exchange plug-in to enhance message distribution based on key words found within the message body and attachments. This optional profiling capability, known as TREX, is currently offered by CommPower. Please contact CommPower for additional information on this product.

Visit: www.commpower.com

www.boldonjames.com